



**BUREAU
VERITAS**

TEST REPORT

LAB NO. : (8817)062-0035
DATE : Mar 16, 2017
PAGE : 1 OF 8

APPLICANT : **RealWear, Inc.**
1851 McCarthy Boulevard, Suite 120, Milpitas, CA 95035

DATE OF SUBMISSION : Mar 3, 2017

TEST PERIOD : Mar 3, 2017 to Mar 16, 2017

SAMPLE DESCRIPTION : Head Mounted Tablet

Style No. : T1100G

Manufacturer : Shanghai Sunrise Simcom Limited

SUMMARY OF THE ASSESSMENT

ASSESSMENT Specification – WEEE Directive 2012/19/EU	
Product Category	IV–Consumer equipment
Test reuse and recycling rate (%) / Test recovery rate (%)	88.95/99.78
Minimum reuse and recycling rate (%) / Minimum recovery rate (%)	70/80
Conclusion:	Pass (The submitted sample complies with the WEEE directive 2012/19/EU)
Note: Cleanaway Dienstleistungs GmbH & Co KG is the nominated service provider committed to ensure state-of the art recycling and waste processing	

BUREAU VERITAS SHENZHEN CO.,LTD
DONGGUAN BRANCH

Harvey Xue
Assistant Manager, Analytical Lab

RT/KC/CL

REMARK

If there are questions or concerns on this report, please contact the following persons:

Report Enquiry: (86) 0769 85935656 Ext. 8819 CPSAnalytical.DG@cn.bureauveritas.com

Business Contact: (86) 0769 85893595

This report shall not be reproduced except in full, without the written approval of our laboratory.

Photo of the Submitted Sample



2. ASSESSMENT SUMMARY

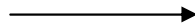
2.1 Assessment Summary Table

No.	Description of the sub-assessable	Weight (g)	Weight (%)	Reuse	Recycling	Energy Recovery	Disposal
1	Black plastic	186.78	49.64		X		
2	Black soft plastic	24.00	6.38		X		
3	Grey printed black soft plastic	9.20	2.44		X		
4	Black plastic	8.40	2.23		X		
5	Black/silver/purple coated transparent plastic	1.91	0.51		X		
6	Silver coated grey plastic	1.36	0.36		X		
7	Red plastic	0.96	0.26		X		
8	Green plastic	0.48	0.13		X		
9	White plastic	0.47	0.12		X		
10	Black plastic	0.29	0.08		X		
11	Transparent plastic	0.19	0.05		X		
12	Silvery/coppery/black/golden metal	97.82	26.00		X		
13	PCB	25.93	6.89			X	
14	Grey printed black soft plastic	0.18	0.05		X		X
15	Black soft plastic	4.19	1.11			X	
16	Black soft plastic	1.89	0.50			X	
17	Grey soft plastic	1.22	0.32			X	
18	White soft plastic	0.76	0.20			X	
19	Translucent soft plastic	0.72	0.19			X	
20	Black printed white plastic	0.08	0.02			X	
21	Black coated transparent glass	2.80	0.74		X		
22	Silvery plated transparent plastic	0.70	0.19				X
23	Black soft plastic	1.42	0.38			X	
24	Yellow soft plastic	0.87	0.23			X	
25	Translucent soft plastic	0.27	0.07			X	
26	Red soft plastic	0.24	0.06			X	
27	Brown soft plastic	0.16	0.04			X	
28	Black soft plastic	0.06	0.02			X	
29	Black fabric	2.93	0.78			X	
Total		376.28	100.00				
Total disassembly time (min)		80					
Disassembly tools		Screwdriver, Pliers					

2.2 Conclusion

Product Category IV-Consumer equipment		
	Actual (%)	Request (%)
Reuse and recycling rate	88.95	70
Recovery rate	99.78	80

2.3 Recommended Disassembly Sequence



HMT-1

HMT-1

3. Assessment Results of the sub-assembly

3.1 Individual Part 1



1



2



3



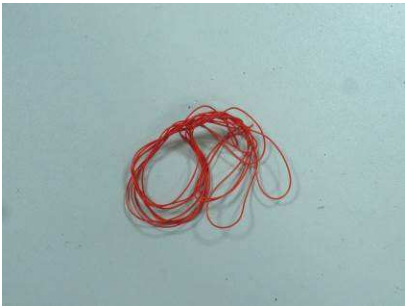
4



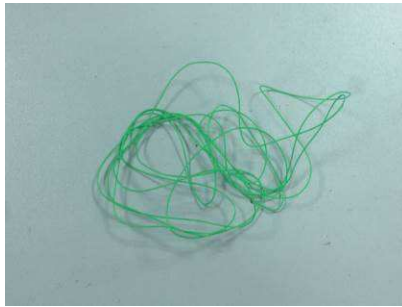
5



6



7



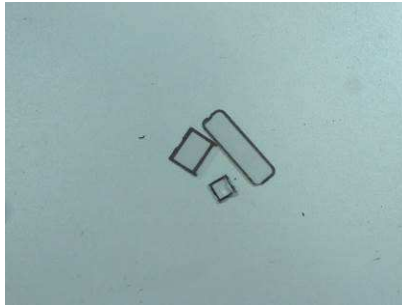
8



9



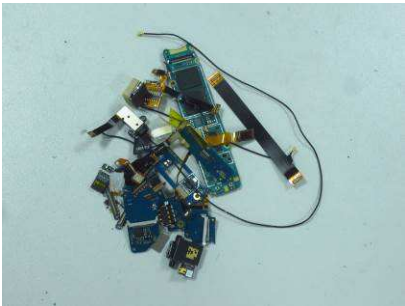
10



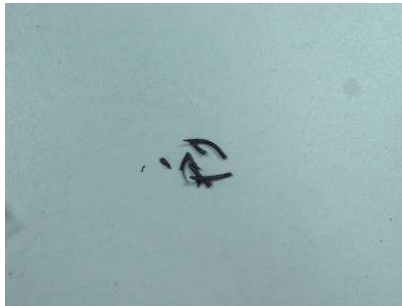
11



12



13



14



15



16



17



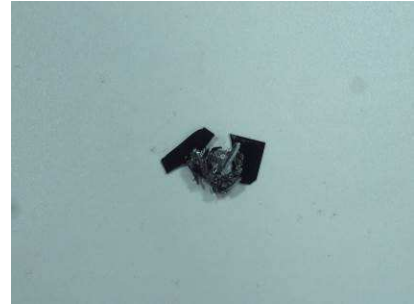
18



19



20



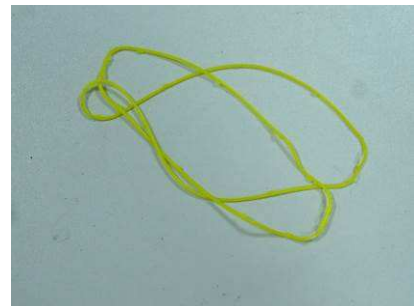
21



22



23



24



25



26



27



28



29



LAB NO. : (8817)062-0035
 DATE : Mar 16, 2017
 PAGE : 7 OF 8

Assessed part	Material	Weight (g)	Weight (%)	Reuse	Recycling	Energy Recovery	Disposal
1 Black plastic	Known plastic	186.78	49.64		X		
2 Black soft plastic	Known plastic	24.00	6.38		X		
3 Grey printed black soft plastic	Known plastic	9.20	2.44		X		
4 Black plastic	Known plastic	8.40	2.23		X		
5 Black/silver/purple coated transparent plastic	Known plastic	1.91	0.51		X		
6 Silver coated grey plastic	Known plastic	1.36	0.36		X		
7 Red plastic	Known plastic	0.96	0.26		X		
8 Green plastic	Known plastic	0.48	0.13		X		
9 White plastic	Known plastic	0.47	0.12		X		
10 Black plastic	Known plastic	0.29	0.08		X		
11 Transparent plastic	Known plastic	0.19	0.05		X		
12 Silvery/coppery/black /golden metal	Metal	97.82	26.00		X		
13 PCB	PCB	25.93	6.89			X	
14 Grey printed black soft plastic	PVC	0.18	0.05		X		X
15 Black soft plastic	Unknown plastic	4.19	1.11			X	
16 Black soft plastic	Unknown plastic	1.89	0.50			X	
17 Grey soft plastic	Unknown plastic	1.22	0.32			X	
18 White soft plastic	Unknown plastic	0.76	0.20			X	
19 Translucent soft plastic	Unknown plastic	0.72	0.19			X	
20 Black printed white plastic	Unknown plastic	0.08	0.02			X	



LAB NO. : (8817)062-0035
DATE : Mar 16, 2017
PAGE : 8 OF 8

21	Black coated transparent glass	Glass without HS	2.80	0.74		X		
22	Silvery plated transparent plastic	Aluminium plated film	0.70	0.19				X
23	Black soft plastic	Rubber	1.42	0.38			X	
24	Yellow soft plastic	Rubber	0.87	0.23			X	
25	Translucent soft plastic	Rubber	0.27	0.07			X	
26	Red soft plastic	Rubber	0.24	0.06			X	
27	Brown soft plastic	Rubber	0.16	0.04			X	
28	Black soft plastic	Rubber	0.06	0.02			X	
29	Black fabric	Fabric	2.93	0.78			X	
Total			376.28	100.00		88.95	10.83	0.22
Disassembly Time (min)			80	Disassembly Tools			Screwdriver Pliers	

*** End of Report ***